

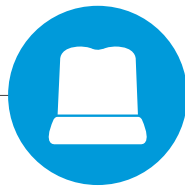


Modular Icemakers

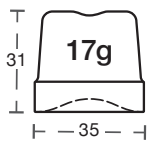
Introducing the modular icemaker range from DC. Crystalline ice on demand.



Classic Ice



Solid cubes of crystalline ice that cools quickly and melts slowly - suitable for bars, night clubs, pubs, restaurants, healthcare industries, educational facilities, hotels and supermarkets.

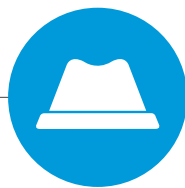


Other ice sizes are available, please enquire for further details.

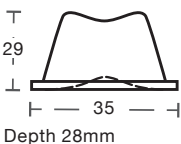


Model	Production kg's p/24hrs	Storage kg	Dimensions mm (inc feet) W x D x H	Amps Required	Warranty Years
DC155A	155	-	862 x 555 x 720	13	3
DC300A	300	-	1250 x 580 x 848	32	3

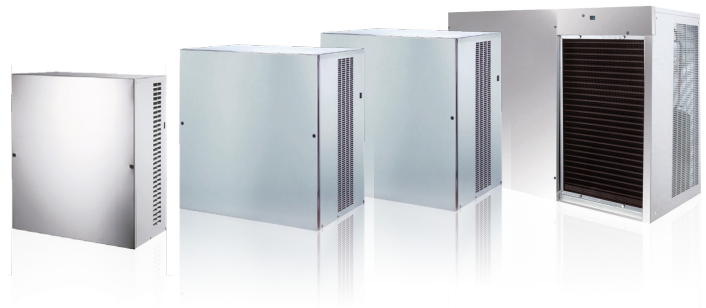
Pyramid Ice



High volume quick cooling ice cubes - suitable for bars, night clubs, pubs, restaurants, healthcare industries, educational facilities, hotels and supermarkets.



Other ice sizes are available, please enquire for further details.

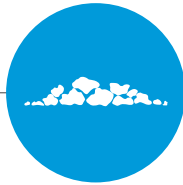


Model	Production kg's p/24hrs	Storage kg	Dimensions mm (inc feet) W x D x H	Amps Required	Warranty Years
DCV140A	140	-	540 x 544 x 747	13	3
DCV225A	225	-	770 x 550 x 805	20	3
DCV415A	415	-	770 x 550 x 805	32	3
DCV750A	750	-	1250 x 645 x 950	32	3

Welcome to a Cleaner World

Granular Ice

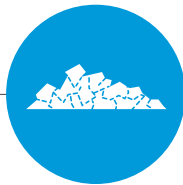
Similar to crushed ice it's softer than cubes and chewable, while its mouldable qualities suit displays or packaging applications - suitable for cocktail bars, cafeterias, healthcare industries, carehomes, fast-food outlets, educational facilities, hotels, fishmongers, supermarkets, transport and processing operations.



Model	Production kg's p/24hrs	Storage kg	Dimensions mm (inc feet) W x D x H	Amps Required	Warranty Years
DCG160A	160	-	560 x 569 x 600	13	3
DCG250A	280	-	640 x 470 x 700	13	3
DCG500A	510	-	640 x 470 x 700	32	3
DCG1000A	1000	-	934 x 684 x 700	32	3

Flaked Ice

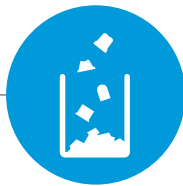
Produced at sub-zero temperatures its 1.5-3mm flakes are the quickest cooling of all the ice types - suitable for the food industry (fish, dairy, meat cutting etc) processing and preserving, medical applications, product displays, transport and packaging operations.



Model	Production kg's p/24hrs	Storage kg	Dimensions mm (inc feet) W x D x H	Amps Required	Warranty Years
DCF400A	400	-	900 x 588 x 705	16	3
DCF900A	900	-	1107 x 700 x 880	32	3

Modular Bins

Our comprehensive range of ice-storage bins are constructed using insulated catering-grade stainless steel or high-density plastic. They come in a wide range of sizes to accommodate the needs of all catering environments.



Model	Ice Storage kg's p/24hrs	Dimensions mm (inc feet) W x D x H	Compatible icemakers	Materials	Warranty Years
B100	100	560 x 815 x 1100	DCV140, DCG160, 250 & 500	Stainless steel and plastic	3
B400	200	870 x 790 x 1100	DC155, DCV, DCG250 & 500	Stainless steel	3
B850	350	1250 x 790 x 1100	DC155 & 300, DCV, DCG, DCF	Stainless steel	3
B530	240	942 x 795 x 1153	DC155, DCV, DCG250 & 500	Plastic	3

Ambient air operating temperatures:
Minimum = +10°C Maximum = +38°C
Water inlet connection: 3/4"

Waste connection: 21mm
Icemaker ventilation: 200mm to the rear,
50mm to the sides and top

Productions figures are based on a 20°C ambient operating temperature and 15°C water inlet temperature



DC Products

Unit 25 Lodge Hill Industrial Park, Westbury Sub Mendip, Somerset, BA5 1EY

t: +44 (0)1749 870055 f: +44 (0)1749 870056 e: sales@dcproducts.co.uk

www.dcprouducts.co.uk

